

TALEX LED

TALEXengine DC-String



Spotlights



Downlights



Linear



Wide Area



Floor | Wall



Free Standing



Decorative



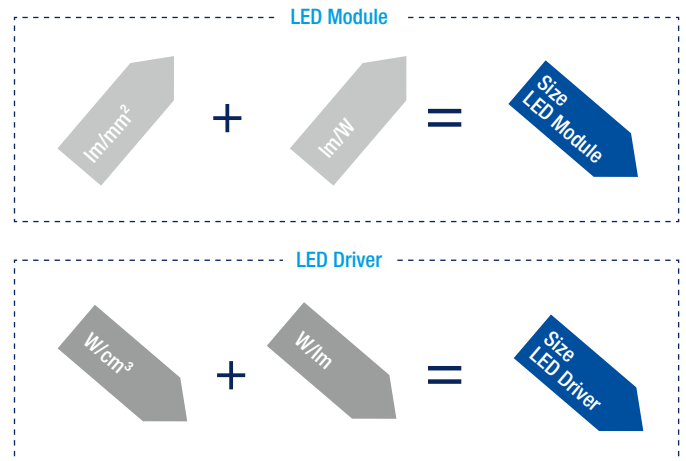
High Bay

The LED track light revolution for aesthetic designs

Modern LED technology not only provides maximum efficiency and long life for the luminaire, but also enables luminaires to be miniaturised. With its new TALEXengine DC-String, Tridonic has the solution to minimise shapes and therefore maximise ceiling harmonics.

Size matters

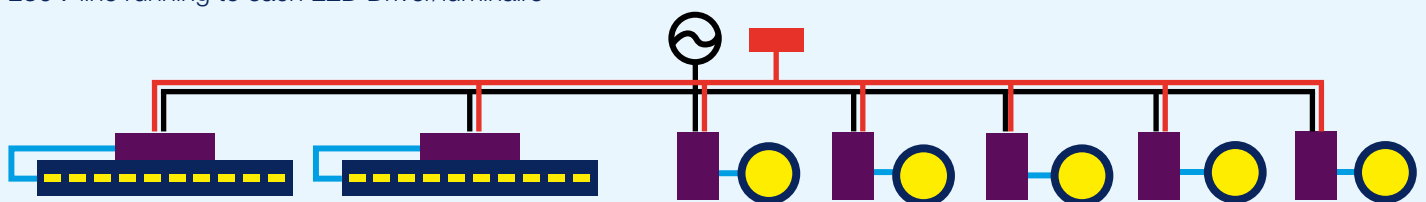
- ___ Trend: driven by design
- ___ Customers seek slim casing and design
- ___ Design of the modules is getting smaller but still the design of the luminaire itself is limited
- ___ Miniaturisation limited by size of LED Driver
- ___ Luminaire size and design more and more dominated by the LED Driver



Comparison old and new systems & components

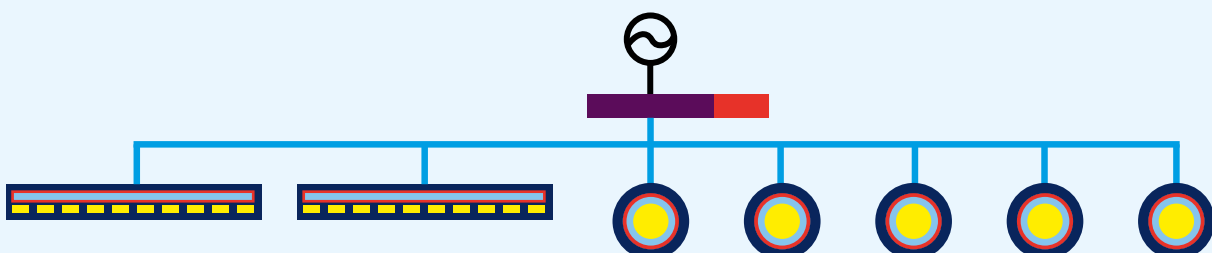
Today: High Voltage AC System

- ___ LED Driver required for each module/luminaire
- ___ Luminaire size determined largely by LED Driver dimensions
- ___ Communication lines to each individual luminaire
- ___ 230V line running to each LED Driver/luminaire



Tomorrow: Low Voltage DC System (LVDC)

- ___ A LVDC System provides significant benefits in terms of design, installation and maintenance
- ___ The Low Voltage DC-String system is driven by one centralised LED Driver
- ___ Only DC/DC part remains with each module/luminaire, allowing further miniaturisation of the luminaire
- ___ Integrated DALI communication allows individual luminaire control
- ___ Safe and easy luminaire exchange by everyone



TALEXengine DC-String

Tridonic has the solution: TALEXengine DC-String



A centralised DC-String Driver offers remarkable freedom in design as the DC-String Driver is fully hidden in the suspended ceiling and makes trackboxes for each spotlight unnecessary.

▼ At a glance: TALEXengine DC-String

- Miniaturisation of luminaires and tracks
Tridonic's new DC-String provides miniaturisation of luminaires and tracks to achieve a harmonic and aesthetic ceiling.
- Individual luminaire control via the DC power lines
Despite the miniaturisation, DC-String still offers full control of individual track luminaires by sending the commands via the DC power lines.
- Safe and easy luminaire exchange by everyone
Due to the low DC voltage in the track, a luminaire replacement is safe and easy for everyone.

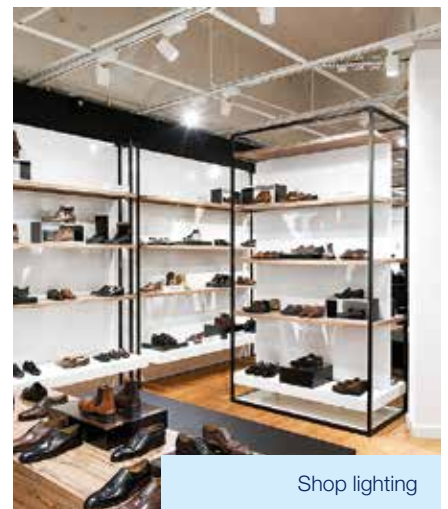
Typical applications to be replaced by DC-String



Hospitality



Showcase lighting



Shop lighting

Your benefits

OEM

New miniaturised luminaire designs
Eliminate trackbox
Smaller tracks possible
Individual luminaire dimming without additional wiring



Architect / Planner

New ceiling / room design opportunities
Improved ceiling aesthetics through miniaturisation of track light systems
Emergency and DALI compatible to cover track lighting with one design



Installer

Quick and easy installation
SELV – safe and easy to install
Hot-Plug-In possible – quick commissioning
Quick upgrade to DALI dimmable track lights



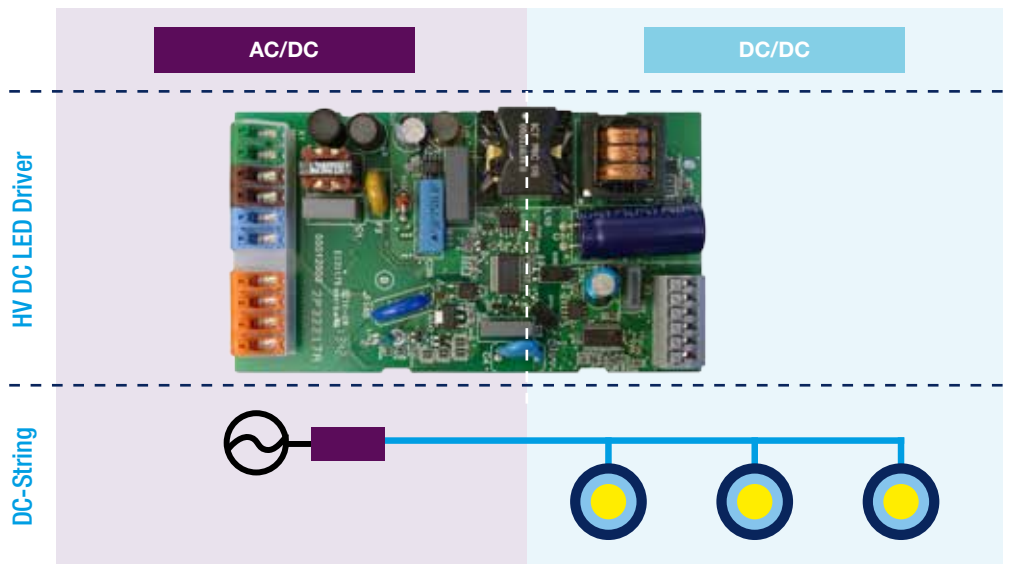
End User

Quick and easy maintenance
SELV - no electrician needed for luminaire exchange
Hot-Plug-In possible – quick & safe exchange
Reduced maintenance costs by concentrating critical building blocks to central supply

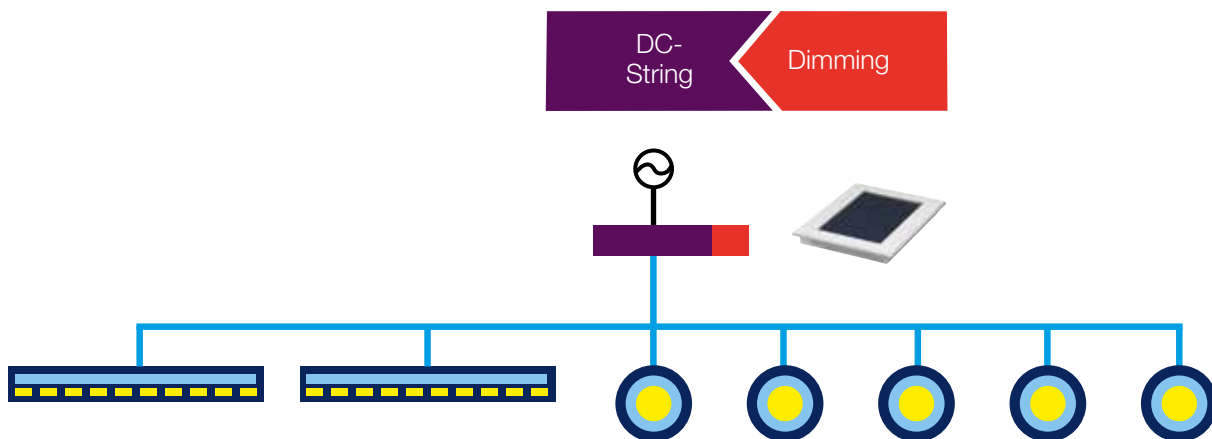


Where does it all go?

- ___ Most of the space within a LED Driver is required for AC/DC conversion
- ___ The DC-String has a central AC/DC LED Driver, separated from the LED modules
- ___ Only the DC/DC LED Driver is part of the luminaire itself



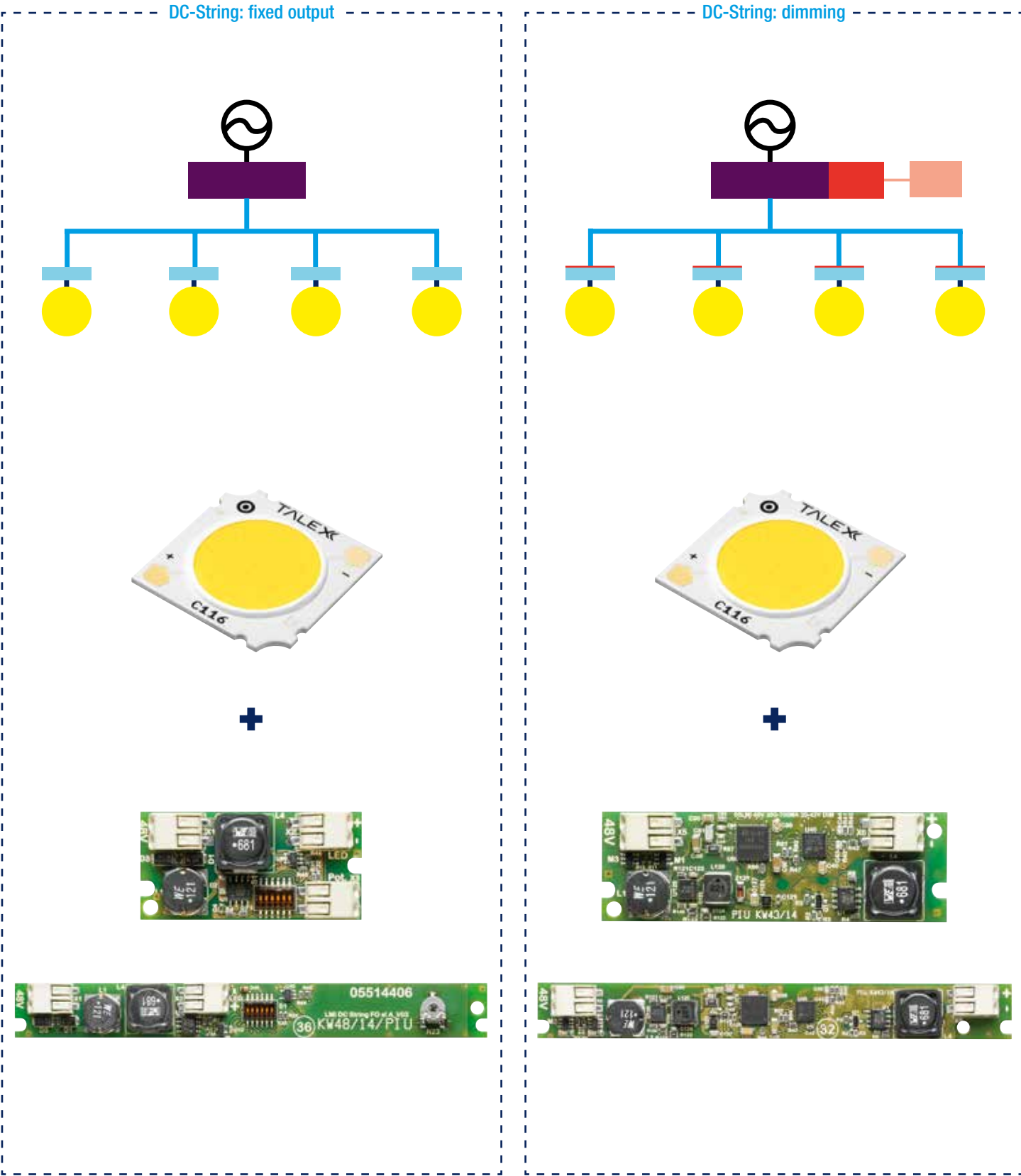
DC-String: components and functionality of the power line

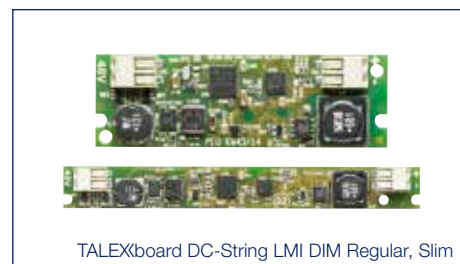
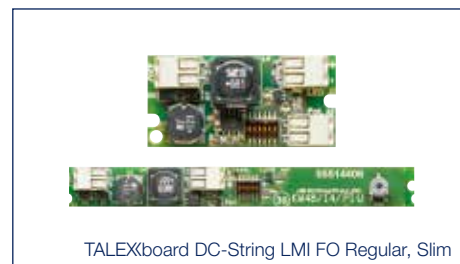


Dimming via power line

- ___ Control via DC Power Line Communication (PLC) – no extra wiring for individual luminaire dimming
- ___ DALI to PLC bridge fully integrated into AC/DC Driver
- ___ Guaranteed DALI compatibility for use of standard DALI controls
- ___ Each node appears individually at the DALI system as a regular AC/DC light

DC-String — Tridonic's solution





TALEXdriver DC-String | Linear Low Profile and Independent

Designation	Output current at full load (mA)	Output voltage range (V)	Output power (W)	SELV 60V	Input voltage (V)	Size (mm)	Order No.
TALEXdriver DC-String Linear Low Profile							
LCU 48V 75W DC-STR FO Ip	358	48	75	yes	220~240	360 x 30 x 21	28000816
LCU 48V 75W DC-STR DIM Ip	360	48	75	yes	220~240	360 x 30 x 21	28000815
LCU 48V 150W DC-STR FO Ip	708	48	150	yes	220~240	360 x 40 x 21	28001234
LCU 48V 150W DC-STR DIM Ip	710	48	150	yes	220~240	360 x 40 x 21	28001235
TALEXdriver DC-String Independent							
LCU 48V 75W DC-STR FO SR	359	48	75	yes	220~240	235 x 100 x 31	28001232
LCU 48V 75W DC-STR DIM SR	359	48	75	yes	220~240	235 x 100 x 31	28001233
LCU 48V 150W DC-STR FO SR	707	48	150	yes	220~240	235 x 100 x 31	28001045
LCU 48V 150W DC-STR DIM SR	710	48	150	yes	220~240	235 x 100 x 31	28001044

TALEXboard DC-String | fixed output and dimming

Designation	Output current (mA)	Output voltage range (V)	Output power (W)	Output power (W)	Input voltage (V)	Size (mm)	Order No.
TALEXboard DC-String fixed output							
LMI G2 48V 350-700mA 3-20V FO Slim	350-700	3-20	7-14	yes	46~50	125 x 14,8 x 12,5	28000730
LMI 48V 350-700mA 20-42V FO Slim	350-700	20-42	14,7-29,4	yes	46~50	125 x 14,8 x 12,5	28000947
LMI 48V 350-700mA 20-42V FO Regular	350-700	20-42	14,7-29,4	yes	46~50	49,3 x 23,8 x 12,5	28000728
LMI G2 48V 700-1050mA 3-20V FO Slim	700-1,050	2,5-20	14-21	yes	46~50	125 x 14,8 x 12,5	28001582
TALEXboard DC-String dimming							
LMI G2 48V 350-700mA 3-20V DIM Slim	350-700	3-20	7-14	yes	46~50	125 x 14,8 x 12,5	28000731
LMI 48V 350-700mA 20-42V DIM Slim	350-700	20-42	15,4-30,9	yes	46~50	125 x 14,8 x 12,5	28000948
LMI 48V 350-700mA 20-42V DIM Regular	350-700	20-42	15,4-30,9	yes	46~50	75 x 23,8 x 12,5	28000729
LMI G2 48V 700-1050mA 3-20V DIM Slim	700-1,050	3-20	14-21	yes	46~50	125 x 14,8 x 12,5	28001583

Support and advice from a single source

We will help you to create lighting solutions that are unbeatable in terms of economy and functionality, according to the slogan: We devote all our energy to your light.



TALEXengine DLE



TALEXengine CLE



TALEXengine CLE Integrated



TALEXengine LLE-FLEX



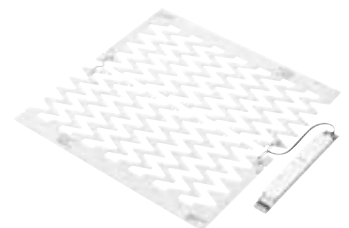
TALEXengine SLE



TALEXengine FLE



TALEXengine LLE



TALEXengine QLE

As an international company, Tridonic is represented worldwide by 30 branch offices and partners in 73 countries.



Headquarters

Tridonic GmbH & Co KG
Färbergasse 15 | 6851 Dornbirn, Austria
T +43 5572 395-0 | F +43 5572 20176
www.tridonic.com | sales@tridonic.com

Light you want to follow.

