

The TRIDONIC logo is displayed in a bold, light blue, sans-serif font. The background of the entire page is a dark blue gradient with a complex, white line-art pattern of technical drawings, including cross-sections of mechanical components and various geometric shapes like circles and rectangles. A horizontal bar with segments of yellow, blue, and white is positioned above the logo.

TRIDONIC

▼ enlightening your ideas

Product manual

TALEXKdriver LCA PRE/LC EXC

Table of contents

1 Validity	4
1.1 Copyright	4
1.2 Imprint	4
2 Safety instructions	5
2.1 Intended use	5
2.2 Dangers associated with the operation of the system	5
2.3 Environment	5
2.4 Additional instructions	6
3 Description and key features	7
3.1 Description of key features	7
3.2 Two-part layer structure	8
3.3 Dimming technology	10
3.4 Housing variants	11
3.5 Adjustable output current, voltage and power	13
3.6 Product description	14
4 Compatibility between LED module and LED driver	16
4.1 Comparison of data sheet values with a 5-point guideline	16
4.2 Application of the 5-point guideline	18
4.3 Practical tests	24
5 Installation notes	25
5.1 Safety information	25
5.2 Function of the earth terminal	26
5.3 Routing the wires	28
5.4 Maximum loading of circuit breakers	30
6 Functions	34
6.1 corridorFUNCTION V2 (PRE)	34
6.2 DSI (PRE)	39
6.3 switchDIM (PRE)	40
6.4 Power-up Fading (PRE)	44
6.5 DALI (PRE)	45
6.6 ready2mains (PRE, EXC)	47
6.7 Constant Light Output (PRE)	48
6.8 DC recognition (PRE, EXC)	50
6.9 Dimming on DC (PRE)	51
6.10 Intelligent Temperature Guard (PRE, EXC)	52
7 Reference list	54
7.1 Related documents	54
7.2 Downloads	54

7.2 Downloads 54

7.3 Additional information 54

1. Validity

These operating instructions are valid for LED control gear of the LCA PRE and LC EXC series.
If a reference is made to one of the two versions then the descriptions are valid only for that version.

The series comprises additional versions. However, the other versions ADV, SNC, ECO, TOP, TEC are not covered in detail within this documentation.

TRIDONIC GmbH & Co KG is constantly striving to develop all its products. This means that there may be changes in form, equipment and technology.

Claims cannot therefore be made on the basis of information, diagrams or descriptions in these instructions.

The latest version of these operating instructions is available on our home page at

<http://www.tridonic.com/com/en/operating-instructions.asp>

1.1. Copyright

This documentation may not be changed, expanded, copied or passed to third parties without the prior written agreement of TRIDONIC GmbH & Co KG.

We are always open to comments, corrections and requests. Please send them to info@tridonic.com

1.2. Imprint

Tridonic GmbH & Co KG
Färbergasse 15
6851 Dornbirn
Austria

T +43 5572 395-0

F +43 5572 20176

www.tridonic.com

2. Safety instructions

The instructions in this section have been compiled to ensure that operators and users of LED control gear LCA PRE and LC EXC from Tridonic are able to detect potential risks in good time and take the necessary preventative measures.

The operator must ensure that all users fully understand these instructions and adhere to them. This device may only be installed and configured by suitably qualified personnel.

2.1. Intended use

2.1.1. Proper use

Operation of LED light modules. The device may only be used for this intended purpose.

2.1.2. Improper use

Outdoor use. Extensions and modifications to the product.

WARNING!

Improper use could result in injury, malfunction or damage to property.
It must be ensured that the operator informs every user of existing hazards.

2.2. Dangers associated with the operation of the system

DANGER!

Danger of electrocution
Disconnect the power to the entire lighting system before working on the lighting system!

2.3. Environment

DANGER!

Not to be used in corrosive or explosive environments.

CAUTION!

Risk of damage caused by humidity and condensation

- ▶ Only use the control device in dry rooms and protect it against humidity!
- ▶ Prior to commissioning the system, wait until the control device is at room temperature and completely dry!

2.4. Additional instructions

CAUTION!

Electromagnetic compatibility (EMC)

Although the device meets the stringent requirements of the appropriate directives and standards on electromagnetic compatibility, it could potentially interfere with other devices under certain circumstances!

3. Description and key features

3.1. Description of key features

LCA PRE and LC EXC is a new portfolio of LED control gear. It has been optimised and simplified to meet the typical requirements of LED solutions.

- ▶ Different requirements:
The layers PRE and EXC offer solutions for different requirements (e.g. dimming/fixed output, lifetime, applications)
- ▶ State-of-the-art dimming technology:
Stepless dimming from 100 to 1% (PRE only) and 100 to $\geq 15\%$ (EXC)
- ▶ Broad range of casing shapes:
Different casing shapes (compact, stretched compact, independent, low profile) and sizes for different built-in versions
- ▶ Adjustable output current:
Simple option for setting current and voltage values transition-free (PRE and EXC) allows the device to be used with virtually all light modules
- ▶ Diversity of functions:
Familiar and new functions (e.g. dimming, DALI, DSI, switchDIM, corridorFUNCTION, ready2mains)

3.2. Two-part layer structure

The three layers LCA PRE and LC EXC differ as follows:

	Portfolio	PRE	EXC
Dimming	Amplitude	✓	✓
	Dimming range	100 to 1%	100 to $\geq 15\%$
			<div> NOTICE <p>The exact minimum value depends on the used device and the load.</p> <ul style="list-style-type: none"> » For certain devices, the minimum value may be higher » When operating with lower load, the minimum value is generally higher <p>More information can be found in the data sheet of the device.</p> </div>
	DALI V2-DT6	✓	
	DSI	✓	
	switchDIM	✓	
	corridorFUNCTION V2	✓	
	ready2mains	✓	✓
DC operation	supporting EN 50172	✓	✓
	DC level fixed		✓
	DC level adjustable	✓	
Current adjustment	Adjustable	✓	✓
	Via resistor or plug	✓	✓
	Via DALI V2-DT6	✓	
	ready2mains	✓	✓
	current resolution	1 mA	1 mA

	current tolerances	+/- 3-10%	see data sheet
Functions & Performances	CLO function	✓	
	Intelligent temperature guard	✓	✓
	Standby losses	<0.2 W	
	Input voltage range	220-240 V	220-240 V

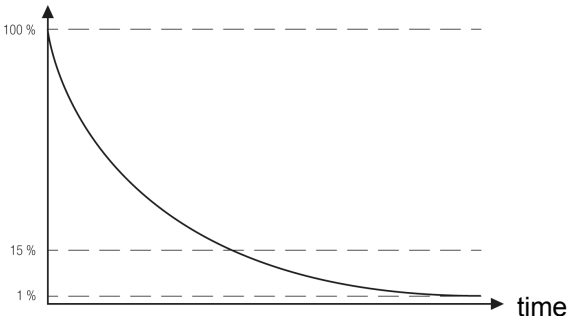
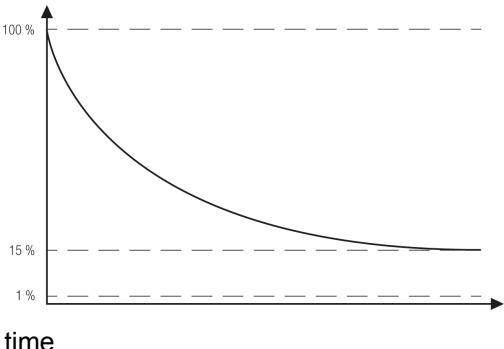
3.2.1. PRE - top performer in efficiency and versatility

- ▶ Dimming: Can be dimmed from 100 to 1% via DALI, DSI, switchDIM, corridorFUNCTION, ready2mains
- ▶ Casing shapes: Four different casing shapes (compact, stretched compact, independent, low profile)
- ▶ Output current: The output current can be set steplessly to any value via DALI, resistor or ready2mains
- ▶ Functions/features:
 - » Dimming: corridorFUNCTION, DSI, switchDIM, DALI, power-up fading, ready2mains
 - » Normal operation: Constant Light Output
 - » Emergency mode: DC detection, dimming on DC
 - » Protection: Intelligent Temperature Guard

3.2.2. EXC - optimum performance and a high degree of flexibility

- ▶ Dimming: 100 to ≥ 15% of max power
- ▶ Casing shapes: Four different casing shapes (compact, stretched compact, independent, low profile)
- ▶ Output current: The output current can be steplessly set to any value via a resistor or ready2mains
- ▶ Functions/features:
 - » Emergency mode: DC detection
 - » Protection: Intelligent Temperature Guard

3.3. Dimming technology

LCA PRE	LC EXC
<p>Output current/ dimming level</p> 	<p>Output current/ dimming level</p> 
<p>PRE uses current amplitude dimming. The dimming range between 100% and 1% is controlled by adjusting the amplitude of the current. The current value specified for the device corresponds to a dimming level of 100%. The amplitude of the current is reduced to reduce the dimming level.</p>	<p>EXC uses amplitude dimming. The dimming range between 100% and $\geq 15\%$ is controlled by adjusting the amplitude of the current. The lowest possible dimming level is $\geq 15\%$ of max power.</p> <div data-bbox="954 1144 1465 1585" style="border: 1px solid #0070C0; padding: 10px;"> <p>HINWEIS</p> <p>The exact minimum value depends on the used device and the load.</p> <ul style="list-style-type: none"> » For certain devices, the minimum value may be higher » When operating with lower load, the minimum value is generally higher <p>More information can be found in the data sheet of the device.</p> </div>
Dimming is stepless and adapted to the human eye.	
PRE can be switched to a linear dimming curve via masterCONFIGURATOR	

3.4. Housing variants

All the layers are available in three different housing variants: compact, independent and low profile.



Housing variant compact

- » Compact shape for installation inside the luminaire casing (in-built)
- » Typical area of application: Spotlights, downlights



Housing variant stretched compact

- » Shape that can be used as compact or independent (for an installation outside the luminaire strain relief can be attached to the casing)
- » Typical area of application: Spotlight, downlight



Housing variant independent

- » Long and small shape for installation outside the luminaire casing (remote)
- » Typical area of application: Spotlights, Downlights
- » Special characteristic: Full loop-through capability of mains and interface (DALI) cables



Housing variant low profile

- » Flat shape for a space-saving installation inside the luminaire casing (in-built)
- » Typical area of application: area lighting, linear lighting

3.5. Adjustable output current, voltage and power

LCA PRE and LC EXC allow for different combinations of power and current based on the standard lumen packages available on the market.

3.5.1. Output current

All the layers cover different output currents.

PRE:

- ▶ Adjustable values
- ▶ Adjustable via resistor, I-select 2 plug, DALI / masterCONFIGURATOR, ready2mains

EXC:

- ▶ Adjustable values
- ▶ Adjustable via resistor, I-select 2 plug, ready2mains

Adjustment of the output current via different resistance values

The output current of the LED control gear can be changed by setting different resistances. The resistance values are taken from the E96 series.

Unlike DALI and ready2mains which do not generate additional tolerances in the output current, tolerances are higher when using I-select 2 plugs.

Adjustment of the output current via I-select 2 plugs

By inserting a suitable resistor into the I-select 2 interface, the current value can be adjusted. The relationship between output current and resistor value looks like this:

- ▶ $R \text{ [k}\Omega\text{]} = 5 \text{ V} / I_{\text{out}} \text{ [mA]} \times 1,000$
- ▶ Resistor value tolerance $\leq 1 \%$; resistor power $\geq 0.1 \text{ W}$; base isolation necessary

If the resistor is connected by wires a consistent base isolation must be ensured. Furthermore, a max. wire length of 2 m must not be exceeded. Potential interferences have to be avoided because they can cause additional tolerance to the output current. To ensure no influence of interferences on the resistor value use shielded wires to connect the I-select 2 plug. GND of shielded wire must be connected to the corresponding I-select 2 plug terminal marked with GND in the datasheet.

LED modules with on-board I-select 2 resistors may cause irreparable damages, caused by surge / burst peaks.

i NOTICE

Please note that the resistor values for I-select 2 are not compatible with I-select (generation 1). Installation of an incorrect resistor may cause irreparable damage to the LED module(s).

Resistors for the main output current values can be ordered from Tridonic (see accessories).

3.6. Product description

- ▶ Ready-for-use resistor to set output current value
- ▶ Compatible with LED Driver featuring I-select 2 interface; not compatible with I-select (generation 1)
- ▶ Resistor is base isolated
- ▶ Resistor power 0.25 W
- ▶ Current tolerance $\pm 2\%$ to nominal current value
- ▶ Compatible with LED Driver series PRE and EXC

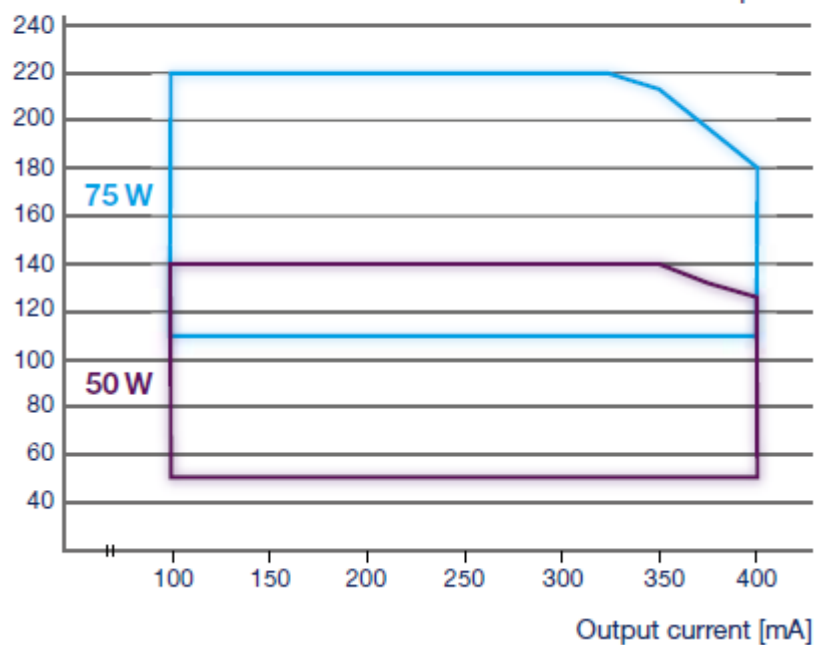
3.6.1. Output voltage

The output voltage range results from the current selected. For more information see the data sheet.

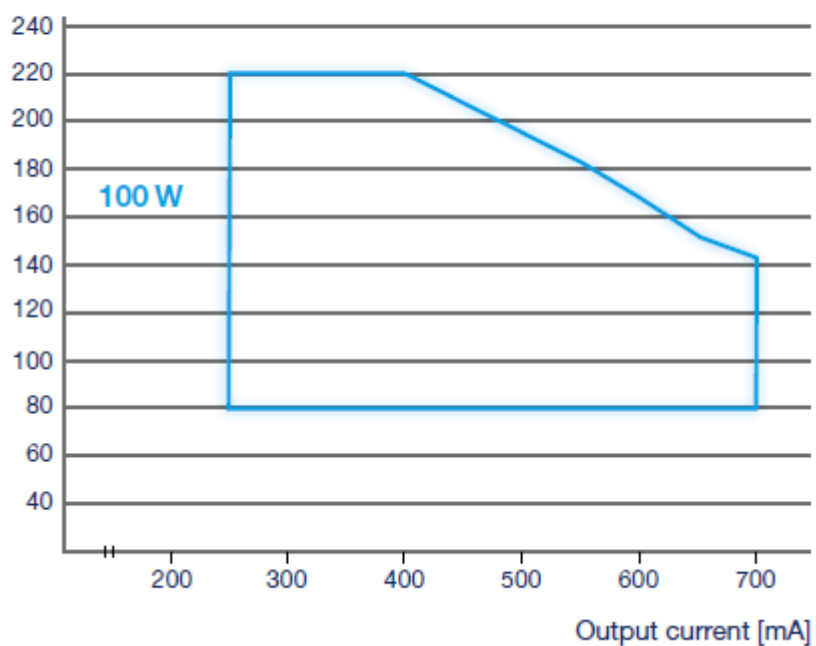
The output current can be adjusted via DALI, ready2mains or an I-Select 2 resistor. The diagrams below show the forward voltage ranges as a function of the output current and are intended as a guide. For detailed values and an explanation of the methods available please refer to the data sheets.

Operating window 100-400 mA I_p

Output voltage [V] — LCA 75W 100-400 mA one4all I_p PRE
 — LCA 50W 100-400 mA one4all I_p PRE

Operating window 250-700 mA I_p

Output voltage [V] — LCA 100W 250-700 mA one4all I_p PRE




4. Compatibility between LED module and LED driver

There are two stages involved in the check for compatibility between the LED module and the LED driver.

- ▶ The requirements for operating together can be checked by comparing the data sheets
- ▶ Subsequent practical tests can ensure that there are no unexpected problems during actual operation

4.1. Comparison of data sheet values with a 5-point guideline

Different values for the two devices need to be considered when comparing the data sheets. The following table shows which values are involved and which requirements they must meet.

Comparison of...	Value in light module		Value in LED driver	Detailed procedure
(1) Current	I_{\max}	=	Output current	<ul style="list-style-type: none">» Determine forward current of LED module» Check whether control gear can be operated with the same output current» Check whether max. DC forward current of LED module is greater than or equal to output current of control gear (including tolerances) <div> CAUTION! The max. DC forward current can be temperature dependent! Refer to the derating curve of the LED module data sheet.</div>
	Max. DC forward current	≥	Output current + tolerances	
continue... → ↓				

Comparison of...	Value in light module		Value in LED driver	Detailed procedure
(2) Voltage	Min. forward voltage	>	Min. output voltage	» Check whether voltage range of LED module is completely within the voltage range of control gear
	Max. forward voltage	<	Max. output voltage	<div> CAUTION! </div> <p>The forward voltage is temperature dependent! Refer to the V_f/t_p diagram in the data sheet.</p>
	Min. forward voltage @ min. dimlevel	>	Min. output voltage	<div> NOTICE </div> <p>To ensure full dimming performance the forward voltage of the LED module at min. dim level must be greater than or equal to the min. output voltage of the driver.</p> <p>» Determine the forward voltage of the LED module at lowest dim level</p> <p>» In case there is no data available for the LED module at lowest dim level: take the min. forward voltage minus 20% as an approximation</p> <p>» Check whether the forward voltage of the LED module is greater than or equal to the min. output voltage of the driver</p>
(3) LF current ripple	Max. permissible LF current ripple	≥	Output LF current ripple (<120Hz)	» Check whether max. permissible LF current ripple of LED module is greater than or equal to output LF current ripple of control gear
(4) Max. peak current	Max. permissible peak current	>	Max. peak output current	» Check whether max. permissible peak current of LED module is greater than max. peak output current of control gear
(5) Power (pertinent for multi channel control gear)	Min. power consumption	>	Min. output power	» Check whether power range of LED module is completely within output power range of control gear
	Max. power consumption	<	Max. output power	

4.2. Application of the 5-point guideline

The compatibility check with the 5-point guideline is shown here using two examples.

4.2.1. Example 1

Comparison data for LED driver

LED driver	
Designation	LCI 20W 350mA-900mA TOP C
Manufacturer	TRIDONIC



Data sheet values of LED driver	
Output current	500 mA
Output current tolerance	$\pm 5\%$
Min. output voltage	18 V ⁽¹⁾
Max. output voltage	40 V ⁽¹⁾
Output LF current ripple	$\pm 2\%$
Max. peak output current	600 mA
Output power	20.0 W

⁽¹⁾ Values at 500mA

Comparison data for LED module

LED module	
Designation	Fictitious device
Manufacturer	Other manufacturer

Data sheet values of LED module	
Forward current	500 mA
Max. DC forward current	1,050 mA
Typ. forward voltage	33 V +/-10% ⁽¹⁾
Min. forward voltage	29.7 V ⁽¹⁾
Max. forward voltage	36.3 V ⁽¹⁾
Max. permissible LF current ripple	630 mA
Max. permissible peak current	1,500 mA
Power draw	16.4 W

⁽¹⁾ Values at 500mA



Questions

- ▶ Are the two devices mutually compatible?
- ▶ Can the required luminous flux of 1,510 lm be achieved with this combination?

Procedure

Comparison of data sheet values

Comparison of...	Value in light module		Value in control gear	Result	Explanation
(1) Current	500 mA	=	500 mA	✓	» To produce a luminous flux of 1,510 lm the light module must be operated with a forward current of 500 mA. » The control gear can be set so that it delivers precisely this value of 500 mA as the output current (with a resistance of 49.90 kΩ).
	1,050 mA	≥	525 mA	✓	» The output current of the control gear including tolerances ($500 \text{ mA} + 5\% = 525 \text{ mA}$) is less than or equal to the max. DC forward current of the light module (1,050 mA).
(2) Voltage	29.7 V	>	18 V	✓	» The voltage range of the light module (29.7 V - 36.3 V) lies completely within the voltage range of the control gear (18 V - 40.0 V).
	36.3 V	<	40 V	✓	
(3) LF current ripple	630 mA	>	535.5 mA	✓	» The Output LF current ripple (2% of output current plus tolerances: $[500 \text{ mA} + 5\%] \times 1.02 = 535.5 \text{ mA}$) of the control gear is less than the max. permissible LF current ripple of the LED module (630 mA).
(4) Max. peak current	1,500 mA	>	600 mA	✓	» The max. peak output current of the control gear ($500 \text{ mA} + 20\% = 600 \text{ mA}$) is less than the max. permissible peak current with which the light module can be operated (1,500 mA).
(5) Power	16.4 W	<	20.0 W	✓	» The power draw of the light module (16.4 W) is less than the output power of the control gear (20.0 W).

Result

All the values meet the requirements. The devices are mutually compatible.

4.2.2. Example 2

Comparison data for LED driver

LED driver	
Designation	LCI 20W 350mA-900mA TOP C
Manufacturer	TRIDONIC



Data sheet values of LED driver	
Output current	500 mA
Output current tolerance	± 5%
Min. output voltage	18 V ⁽¹⁾
Max. output voltage	40 V ⁽¹⁾
Output LF current ripple	± 2%
Max. peak output current	600 mA
Output power	20.0 W

⁽¹⁾ Values at 500mA

Comparison data for LED module

LED module	
Designation	Fictitious device
Manufacturer	Other manufacturer

Data sheet values of LED module	
Forward current	500 mA
Max. DC forward current	1,050 mA
Typ. forward voltage	39.5 V +/-10% ⁽¹⁾
Min. forward voltage	35.55 V ⁽¹⁾
Max. forward voltage	43.45 V ⁽¹⁾
Max. permissible LF current ripple	630 mA
Max. permissible peak current	1,500 mA
Power draw	19.75 W

⁽¹⁾ Values at 500mA



Questions

- ▶ Are the two devices mutually compatible?
- ▶ Can the required luminous flux of 1,800 lm be achieved with this combination?

Procedure

Comparison of data sheet values

Comparison of...	Value in light module		Value in LED driver	Result	Explanation
(1) Current	500 mA	=	500 mA	✓	» To produce a luminous flux of 1,800 lm the light module must be operated with a forward current of 500 mA. » The control gear can be set so that it delivers precisely this value of 500 mA as the output current (with a resistance of 49.90 kΩ).
	1,050 mA	≥	525 mA	✓	» The output current of the control gear including tolerances (500 mA + 5% = 525 mA) is less than or equal to the max. DC forward current of the light module (1,050 mA).
(2) Voltage	35.55 V	>	18 V	✓	» The voltage range of the light module (35.55 V - 43.45 V) is not within the voltage range of the control gear (18 V - 40.0 V)
	43.45 V	<	40 V	✗	
(3) LF current ripple	630 mA	>	535.5 mA	✓	» The Output LF current ripple (2% of output current plus tolerances: [500 mA + 5%] x 1.02 = 535.5 mA) of the control gear is less than the max. permissible LF current ripple of the LED module (630 mA).
(4) Max. peak current	1,500 mA	>	600 mA	✓	» The max. peak output current of the control gear (500 mA + 20% = 600 mA) is less than the max. permissible peak current with which the light module can be operated (1,500 mA).
(5) Power	19.75 W	<	20.0 W	✓	» The power draw of the light module (19.75 W) is less than the output power of the control gear (20.0 W).

Result

One of the values **does not** meet the requirements. The devices are **not** mutually compatible.

4.3. Practical tests

Practical tests are used to ensure fault-free operation of the light module and LED driver. The following aspects must be checked.

4.3.1. Technical aspects

- ▶ Transient behaviour
- ▶ Colour shift
- ▶ Connection during operation
- ▶ Parasitic capacitance

4.3.2. Visual aspects

- ▶ Flickering
- ▶ Stroboscopic effect (video applications)
- ▶ Dimming behaviour
- ▶ Colour change/stability
- ▶ Luminous flux

4.3.3. Conditions

When conducting the tests the following conditions must be considered:

- ▶ All tolerances
- ▶ Entire temperature range
- ▶ Different output voltage ranges (incl. no load)
- ▶ Entire dimming range
- ▶ Short circuit

NOTICE

If the values are slightly over or under the specified threshold values or if there are any other concerns or questions please contact Technical Support: techservice@tridonic.com

5. Installation notes

NOTICE

The cabling, wiring and mounting for a LED driver varies depending on the design and manufacturer of the LED module.

The following description should therefore not be viewed as comprehensive installation instructions but merely as important general information.

To obtain further information, proceed as follows:

- ▶ Read the documentation provided by the lamp manufacturer. Follow the guidelines and instructions of the lamp manufacturer!
- ▶ Observe all relevant standards. Follow the instructions given in the standards!

5.1. Safety information

WARNING!

- ▶ Comply with the general safety instructions (see chapter "Safety instructions") !
- ▶ To avoid failures due to ground faults protect the wiring against mechanical loads from sharp-edged metal parts (e.g. cable penetrations, cable holders, metal frames, etc.
- ▶ Electronic control gear from Tridonic are protected for a maximum of 48 hour against overvoltage of up to 320 V. Make sure that the control gear is not exposed to overvoltages for long periods!
- ▶ Electronic control gear LCA PRE, LC EXC from Tridonic have type of protection IP 20. Comply with the requirements for this type of protection!

5.2. Function of the earth terminal



The earth connection is conducted as protection earth (PE). The LED Driver can be earthed via earth terminal or metal housing (if device has metal housing). If the LED Driver will be earthed, protection earth (PE) has to be used. There is no earth connection required for the functionality of the LED Driver. Earth connection is recommended to improve following behaviour.

- ▶ Electromagnetic interferences (EMI)
- ▶ LED glowing at standby
- ▶ Transmission of mains transients to the LED output

In general it is recommended to earth the LED Driver if the LED module is mounted on earthed luminaire parts respectively heat sinks and thereby representing a high capacity against earth.

5.2.1. Avoiding residual LED glow on standby

Residual LED glow on standby may occur as a result of capacitive leakage currents from the LED module onto earthed luminaire parts (such as the heat sink). This mainly affects high-efficiency LED systems with large surface areas installed in luminaires with protection class 1.

The topology has been improved so that residual LED glow can be virtually eliminated by earthing the devices.

NOTICE

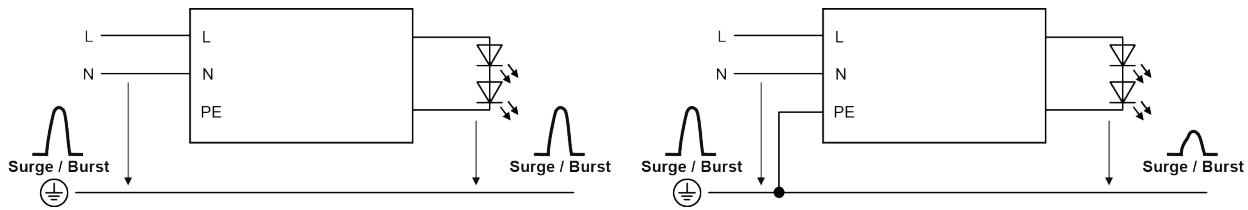
If the LED driver cannot be earthed or if earthing is not desired, residual LED glow can be minimised by adequate insulation (for example by using heat-conducting double-sided insulation foil).

5.2.2. Avoiding the transfer of mains transients to the LED output

The transfer of mains transients to the LED output presents a problem for many LED driver topologies currently on the market, and TRIDONIC devices may be affected.

Voltage peaks at the input of the LED driver may be transferred to the output of the device where they lead to differences in potential between the LED output and earthed luminaire parts. These differences in potential may result in flashovers if the insulation is inadequate or if the creepage and clearance distances are too small. Flashovers will cause the LED module to fail.

Earthing the LED driver attenuates voltage peaks and reduces the likelihood of flashovers. The precise degree of attenuation depends on the capacitance of the LED module with respect to earth. If voltages at the output are higher than 0.5 kV, it is mentioned in the data sheet.

Figure: Voltage peaks for LED driver without earthing (left) and with earthing (right)**i NOTICE**

Irrespective of whether the LED driver is earthed or not, LED modules must be insulated in accordance with the requirements of the luminaire protection class. Improved insulation of the LED module can also reduce the likelihood of flashovers.

5.3. Routing the wires

5.3.1. Tests

i NOTICE

The performance of the prescribed tests and compliance with relevant standards are the responsibility of the luminaire manufacturer.
The following descriptions merely indicate the most important tests and are no substitute for a full research of the relevant standards.

5.3.2. Insulation and dielectric strength testing of luminaires

LED driver for lamps are sensitive to high-voltage transients. This must be taken into consideration when subjecting luminaires to routine testing during manufacture.

According to IEC 60598-1 Annex Q (for information only!) and ENEC 303-Annex A, each luminaire should be subjected to an insulation test for 1 second at 500 V DC. The test voltage is applied between the linked phase/neutral conductor terminal and the protective earth terminal. The insulation resistance must be at least 2 MOhm.

As an alternative to measuring the insulation resistance, IEC 60598-1 Annex Q describes a dielectric strength test at 1500 V AC (or $1.414 \times 1,500$ V DC). To avoid damaging electronic control gear, this dielectric strength test should be performed exclusively for type testing. This test should certainly not be used for routine testing.

i NOTICE

Tridonic recommends performing an insulation test because a dielectric strength test may damage the device irreparably.

5.3.3. Type testing

Type testing of the luminaire is performed according to IEC 60598-1 Section 10.

The wiring for protection class 1 luminaires is tested at a voltage of $2xU + 1,000$ V. In order not to overload the control gear all the inputs and outputs of the control gear are connected to one another.

U_{out} is used for measuring the voltage for luminaires with control gear with $U_{out} > 250$ V:

For U_{out} 480 V the voltage for the type test is 2000 V. (Routine testing is always performed at 500 V DC)

5.3.4. Wiring

i NOTICE

The wiring procedure is device specific. Further information about wiring, wire cross sections and the length of stripped off insulation can be found in the data sheet.

Wiring guidelines

- ▶ The cables should be run separately from the mains connections and mains cables to ensure good EMC conditions.
- ▶ The LED wiring should be kept as short as possible to ensure good EMC. The max. secondary cable length is 2 m (4 m circuit), this applies for LED output as well as for I-select and temperature sensor.
- ▶ Depending on the design of the luminaire it may be possible to improve the radio interference properties by earthing the device at the earth connection.
- ▶ The LED driver has no inverse-polarity protection on the secondary side. Wrong polarity can damage LED modules with no inverse-polarity protection.

Wiring the plug-in terminal

- ▶ Use solid wire or stranded wire with the correct cross-section
- ▶ Strip off correct length of insulation; you may need to twist the tool slightly
- ▶ If stranded wire is used: push onto the terminal from above to be able to insert the wire
- ▶ Insert the bare end into the terminal

Detaching the plug-in terminal

- ▶ Push onto the terminal from above to release the wire
- ▶ Pull out the wire at the front

5.4. Maximum loading of circuit breakers

5.4.1. Importance of maximum loading

A circuit breaker is an automatically operated electrical switch that protects an electrical circuit from damage caused by overload or short circuit. Unlike a fuse that must be replaced if it triggers, a circuit breaker can be reset (either manually or automatically) and used further. Circuit breakers are available in different sizes and with different technical data.

The inrush current is a short increased peak current that occurs when an electronic control gear is switched on.

In electrical installations, numerous control gear are connected to one circuit breaker. The maximum loading of a circuit breaker indicates how many control gear can be connected to the circuit breaker without triggering the circuit breaker because of the summation of the different inrush currents. The value is calculated through simulation programs based on the circuit breakers characteristic.

Information about the maximum loading can be found in Tridonic data sheets. The following table shows the data for LCA 50W 100-400mA one4all Ip PRE as an example

Automatic circuit breaker type	C10	C13	C16	C20	B10	B13	B16	B20	Inrush current	
Installation Ø	1,5 mm ²	1,5 mm ²	2,5 mm ²	2,5 mm ²	1,5 mm ²	1,5 mm ²	2,5 mm ²	2,5 mm ²	I _{max}	time
LCA 50W 100-400mA one4all Ip PRE	18	26	28	34	9	13	14	17	22,4 A	176 µs

5.4.2. Calculation of maximum loading

Tripping characteristics of circuit breakers

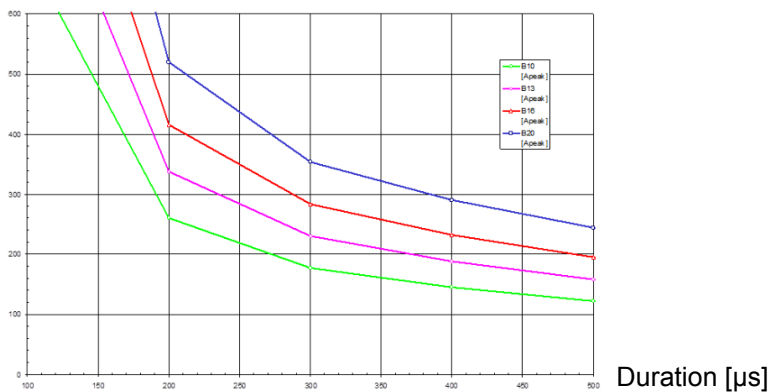
The load at which a circuit breaker triggers is defined by the height and the duration of the applied current. The following table shows exemplary values for different circuit breakers (B10, B13, B16, B20).

Duration [µs]	Current B10 [A _{peak}]	Current B13 [A _{peak}]	Current B16 [A _{peak}]	Current B20 [A _{peak}]
100	700	910	1,120	1,400
200	260	338	416	520
300	177	230.1	283	354
400	145	188.5	232	290
500	122	158.6	195	244

600	110	143	176	220
700	102	132.6	163	204
800	97	126.1	155	194
900	93	120.9	149	186
1000	90	117	144	180

The combination of both parameters can also be displayed graphically. This results in the tripping characteristic for a certain circuit breaker.

Current [A]



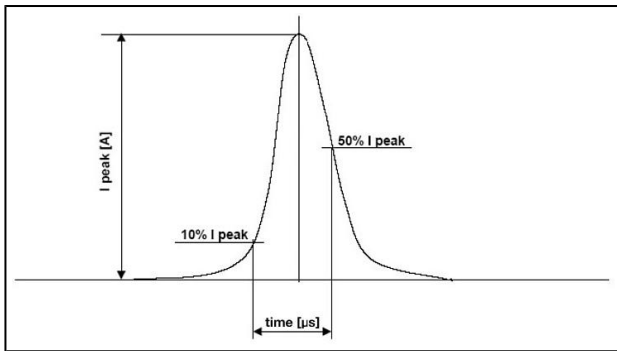
NOTICE

Information about the specific tripping characteristics of a circuit breaker must be requested from the respective manufacturer !

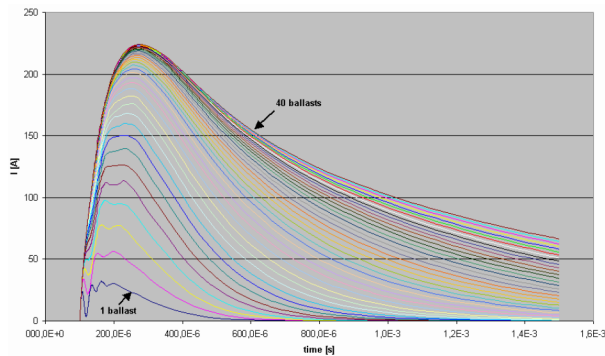
Calculation of the inrush current

The inrush current of a control gear is also defined by its duration and its height. The duration is typically measured as the time between 10% of maximum current (ascending) and 50% of maximum current (descending).

The following illustration shows the inrush current of a single control gear:



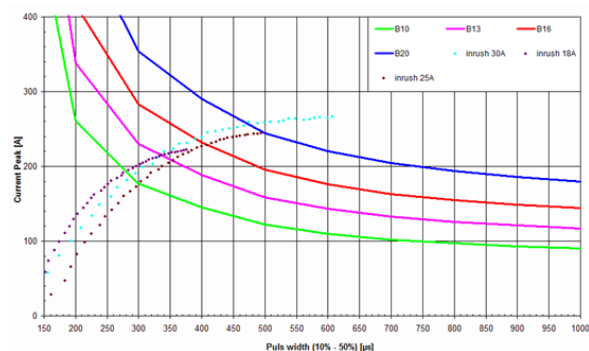
If several control gear are connected to one circuit breaker, the individual inrush currents add up.



Implementation of the simulation

The above-mentioned parameters, height and duration of the current pulse in both the circuit breaker and the control gear, are entered into the simulation program.

The result of the simulation is presented in graphical form.



The different elements have the following meaning:

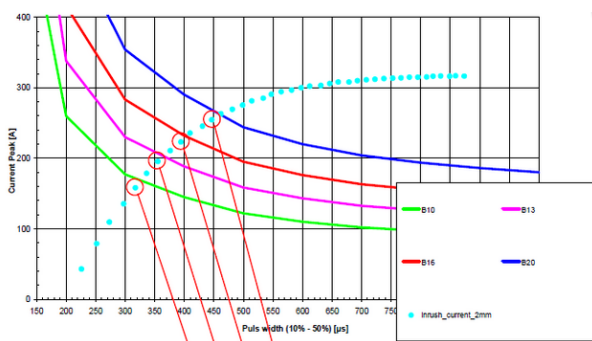
- ▶ **Circuit breaker:**
B10, B13, B16, B20 (solid line) represent the tripping characteristics of different circuit breakers.
- ▶ **Inrush current:**
The dotted lines represent different inrush currents.
The index of a point signifies the number of control gear, that is, point 1 represents the result for 1 ballast, point 2 the result for 2 ballasts, etc.

The simulation results can be read as follows:

- ▶ The crossing of the two lines shows the maximum value for the selected combination of circuit breaker and inrush current.
- ▶ The index of the point at this maximum value shows the max. number of ballasts.

The following example shows the maximum number of control gear at four different circuit breakers:

- ▶ max. 5 devices at circuit breaker B10 (green tripping characteristic)
- ▶ max. 7 devices at circuit breaker B13 (pink tripping characteristic)
- ▶ max. 9 devices at circuit breaker B16 (red tripping characteristic)
- ▶ max. 12 devices at circuit breaker B20 (blue tripping characteristic)



NOTICE

The results of different simulations can only be compared if all of the relevant factors are the same. The following points can influence the results:

- ▶ Tripping characteristic used for the circuit breakers
- ▶ Definition used for the duration of the inrush current (Tridonic: 10-50 %)
- ▶ Gear used for the measurement of the inrush current (especially important: Which electrolytic capacitor is installed in the control gear?)
- ▶ Considering a safety buffer (Tridonic: +20 % for the electrolytic capacitor)
- ▶ Considering different system impedances
- ▶ Switch-on point used: should always be at max. input voltage
- ▶ Adopted cable lengths and cable data (Tridonic: Cable length 40 cm; Resistivity: 0.0172 ohm * mm² / m; inductance: 5nH / cm; terminal resistance: 2mOhm)
- ▶ The modeling of the control gear is performed from the input to the bus voltage electrolytic capacitor . For inductance the saturation values must be used.

6. Functions

6.1. corridorFUNCTION V2 (PRE)

6.1.1. Description

The corridorFUNCTION enables the illuminance to be linked to the presence or absence of people. A conventional relay motion sensor is connected. The luminous intensity is increased when a person enters the room. When the person leaves the room the motion sensor switches off after a certain delay and the luminous intensity is automatically reduced.

The corridorFUNCTION is particularly beneficial in applications in which light is needed round the clock for safety reasons, for example in public buildings, large apartment complexes, car parks, pedestrian underpasses and underground railway stations. Since the luminous intensity only has to be increased when there is a demand for light the corridorFUNCTION offers effective lighting management and helps saving energy and costs. Another benefit of the corridorFUNCTION is the enhanced convenience of automatic lighting control.

⚠ CAUTION!

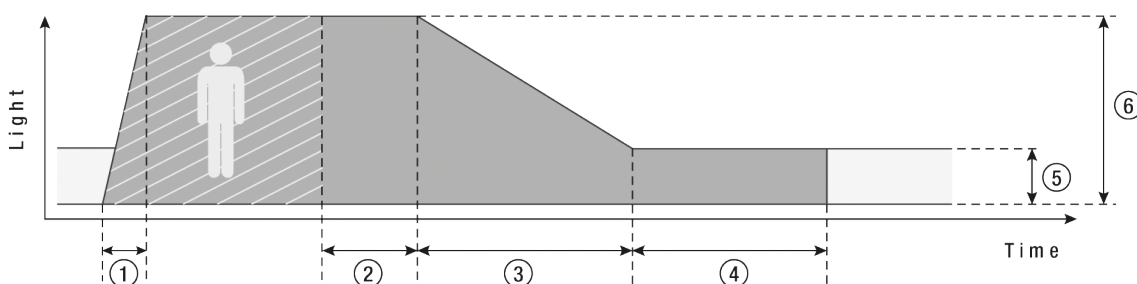
To ensure correct operation a sinusoidal mains voltage with a frequency of 50 Hz or 60 Hz is required at the control input.

Special attention must be paid to achieving clear zero crossings. Serious mains faults may impair the operation of switchDIM and corridorFUNCTION.

Profile settings:

Standard profile for activating via 230V on the interface terminal DA/N - DA/L for 5 minutes is **"Never off"**

The control gear have different profiles so they can provide the best possible performance in a range of conditions. The profiles are defined by a series of values:



1. Fade-in time: the time that starts as soon as the presence of a person is detected. During the fade-in time the luminous intensity is faded up to the presence value (default: 0s).
2. Run-on time: the time that starts as soon as the presence of a person is no longer detected. If the presence of a person is detected again during the run-on time the run-on time is restarted from zero. If no presence is detected during the run-on time the fade time is started as soon as the run-on time expires.
3. Fade time: the time during which the luminous intensity is faded from the presence value to the absence value (default: 30s).

4. Switch off delay: the time during which the absence value is held before the lighting is switched off. Depending on the profile selected the switch-off delay may have different values or may not be defined (default: "Never Off").
5. Absence value: the luminous intensity when there is no person present (default: 10%).
6. Presence value: the luminous intensity when persons are present (default: 100%).

Variable switch-off times

The profiles and their values can be freely adjusted. The values can be adjusted via a connection to a DALI bus.

6.1.2. Commissioning

Activating the corridorFUNCTION

Procedure by means of the mains voltage

Activating the corridorFUNCTION is simple. If an a.c. voltage of 230 V is applied to the digital interface of the control gear for a period of at least 5 minutes the control gear detects the corridorFUNCTION and automatically activates it. Activation is required only once per device.

There are three procedures for activating by means of the mains voltage. The requirements are the same in each case.

Requirements:

- ▶ The control gear is correctly installed in the luminaire
- ▶ Input voltage is applied
- ▶ A motion sensor is connected to information DA/N or DA/L

Procedure Version 1:

- ▶ Remain in the activation range of the motion sensor for more than 5 minutes
 - The motion sensor detects movement and switches on
 - The corridorFUNCTION is activated automatically after 5 minutes
 - The light value switches to presence level (default: 100%)

Procedure Version 2:

- ▶ Set the run-on time on the motion sensor to a value greater than 5 minutes
- ▶ Remain in the activation range of the motion sensor for a short time
 - The motion sensor detects movement and switches on
 - The corridorFUNCTION is activated automatically after 5 minutes
 - The light value switches to presence value (default: 100%)
- ▶ Reset the run-on time of the motion sensor to the required value

Procedure Version 3: Only possible if the motion sensor offers a manual override option

- ▶ Set the slide switch on the motion sensor to the "Never-Off" function
- ▶ Wait 5 minutes
 - The corridorFUNCTION is activated automatically after 5 minutes
 - The light value switches to presence value (default: 100%)
- ▶ Reset the slide switch on the motion sensor to the "automatic" function

Procedure via the masterCONFIGURATOR

The corridorFUNCTION can also be activated via the masterCONFIGURATOR.

Further information can be found in the masterCONFIGURATOR manual (see Reference list).

Deactivating the corridorFUNCTION

If the corridorFUNCTION is activated the control gear is controlled only by motion. To operate the control gear via DALI, DSI or switchDIM the corridorFUNCTION must be deactivated.

Procedure via mains

- ▶ Connect mains voltage push button to the terminal marked DA/L
- ▶ Connect neutral conductor to the terminal marked DA/N
- ▶ Press the push button 5 times within 3 seconds

Procedure via DALI/DSI

- ▶ Send 5 DALI or DSI commands within 3 seconds to the control gear

Procedure via masterCONFIGURATOR

If the corridorFUNCTION was activated via the masterCONFIGURATOR it can be deactivated as follows:

- ▶ Send 5 DALI or DSI commands within 3 seconds to the control gear

Adjusting the values of the corridorFUNCTION

The values of the corridorFUNCTION can be individually adjusted. The values are set via a DALI USB on the bus and by entering special DALI commands via the masterCONFIGURATOR.

Further information can be found in the masterCONFIGURATOR manual (see Reference list).

6.1.3. Installation

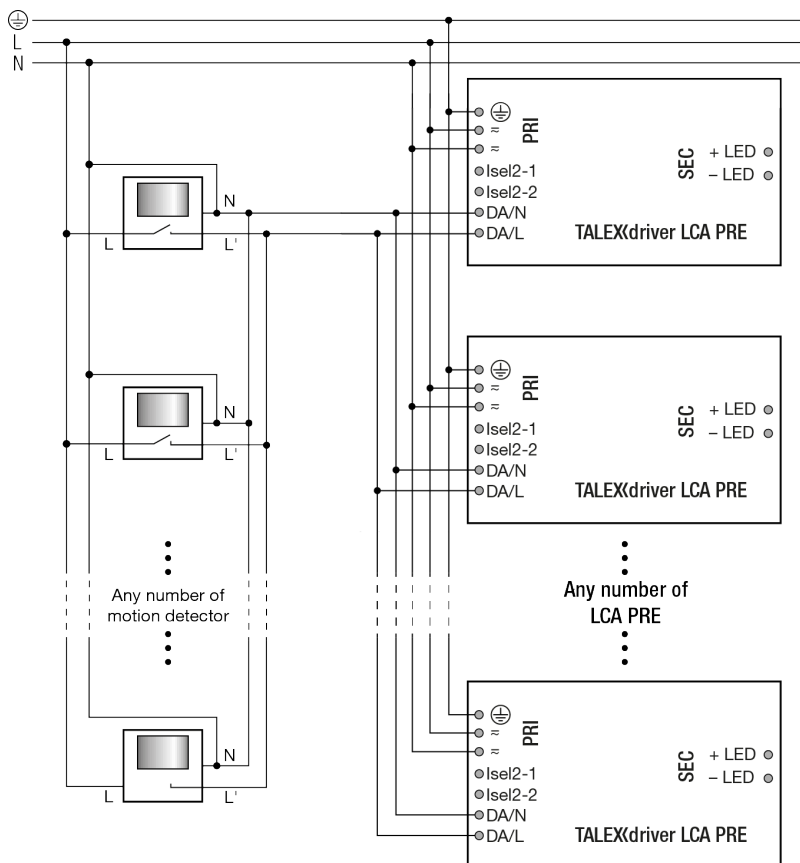
Requirements:

- ▶ The control gear is correctly installed in the luminaire and cabled on the power supply side
- ▶ A motion sensor is installed in the lighting system
- ▶ The motion sensor is connected to the control gear

Procedure:

- ▶ Connect the neutral conductor (N) to terminal DA/N on the control gear
- ▶ Connect the output of the motion sensor (switched phase) to terminal DA/L on the control gear

Wiring versions:



Benefits:

Control can be changed at any time to a digital control signal (DSI or DALI) without having to change the luminaire or provide an additional control line

⚠ CAUTION!

Use conventional relay motion sensors!
Electronic motion sensors (Triac) are not suitable because of their technical design.

⚠ CAUTION!

Do not use glow switches!
Glow switches may affect the control.

⚠ CAUTION!

Make sure that the control line (L') of the motion sensor is connected to terminal DA/L and the neutral conductor (N) to terminal DA/N.

⚠ CAUTION!

For five-pole wiring the neutral conductor must be connected to DA/N.
This prevents 400 V being applied between adjacent terminals if a different phase is used for the control input.

i NOTICE

For large installations, supply to the control gear may be split among several phases (L1, L2, L3).
Any phase can be used for the control input .
Any number of motion sensors can be connected in parallel.

6.2. DSI (PRE)

6.2.1. Description

DSI (Digital Serial Interface) enables DSI control gear to be controlled. The DSI line can be wired separately via a two-core cable or together with the mains cable in a five-core cable. Communication is not impaired by the mains cable. In contrast to DALI, there is no individual addressing of the ballasts with DSI.

DSI offers a series of benefits:

- ▶ Expansion options via submodules, for example in combination with daylight control or additional switch modules
- ▶ Wiring: Simple wiring with five pole standard cables and line length of up to 250 metres
- ▶ Wiring: Polarity-free control lines can be used for mains and control lines
- ▶ Wiring: Multiple wiring possibilities (star, series and mixed wiring)
- ▶ Unaffected by electrical interference
- ▶ Uniform light level from the first to the last light source
- ▶ reverse polarity protected connection: can be connected with any polarity

The main benefits of DSI are the optimisation of energy consumption of extensive groups of luminaires (e.g. in sports stadiums and factories).

6.2.2. Commissioning

NOTICE

If the corridorFUNCTION is activated the control gear is controlled only by motion. To operate the control gear via DALI, DSI or switchDIM the corridorFUNCTION must be deactivated.

Further information can be found in the DALI Handbook (see Reference list).

6.3. switchDIM (PRE)

6.3.1. Description

With the switchDIM function it is possible to use the mains voltage as a control signal.

The phase of a simple standard mains voltage push button is connected to the terminal marked DA/L and the neutral conductor is connected to the terminal marked DA/N.

Using the function is easy and convenient:

- ▶ A short press (50-600 ms) switches the device on or off
- ▶ A long press (> 600 ms) fades the connected operating device alternately up and down (between 1 and 100%).

switchDIM is therefore a very simple form of lighting management. It also has a positive effect on material and labour costs.

The device has a switchDIM memory function. This is used, among other things, for storing the last dimming value in the event of interruptions in the power supply.

When power returns, the LED is automatically restored to its previous operating state and dimmed to the last value.

CAUTION!

Glow switches are not approved for controlling switchDIM.

Glow switches may cause the control gear to spontaneously switch on or off or make sudden changes in the dimming value.

CAUTION!

To ensure correct operation a sinusoidal mains voltage with a frequency of 50 Hz or 60 Hz is required at the terminal.

Special attention must be paid to achieving clear zero crossings. Serious mains faults may impair the operation of switchDIM and corridorFUNCTION.

CAUTIONS!

A maximum number of 25 operating devices per switchDIM system should not be exceeded.

If you have more devices please use DALI or DSI.

6.3.2. Commissioning

NOTICE

If the corridorFUNCTION is activated the control gear is controlled only by motion. To operate the control gear via DALI, DSI or switchDIM the corridorFUNCTION must be deactivated.

Using the switchDIM function

switchDIM is operated by the mains voltage push button.

Procedure:

- ▶ Switch the device on/off by briefly actuating the push button or
- ▶ Dim the device by holding down the push button

Synchronising devices

If the devices in a system do not operate synchronously the devices must be synchronised, i.e. put in the same status (on/off).

Procedure:

- ▶ Hold down the push button for 10 seconds
 - All devices will be synchronised to the same status
 - LEDs will be set to a uniform light value (approx. 50%)
 - The fading time will be set to its default value (approx. 3 seconds)

Changing the fading time

The default value for the fading time is approx. 3 seconds. It can be changed to approx. 6 seconds.

Procedure:

- ▶ Hold down the push button for 20 seconds
 - After 10 seconds: all devices will be synchronised to the same status
 - After 20 seconds: a fading time of approx. 6 seconds will be set
 - LEDs will be set to a uniform light value (approx. 100%)

Switching the control gear to automatic mode

In automatic mode the device detects which control signal (DALI, DSI, switchDIM, etc.) is connected and automatically switches to the corresponding operating mode.

Procedure:

- ▶ Press the push button 5 times within 3 seconds

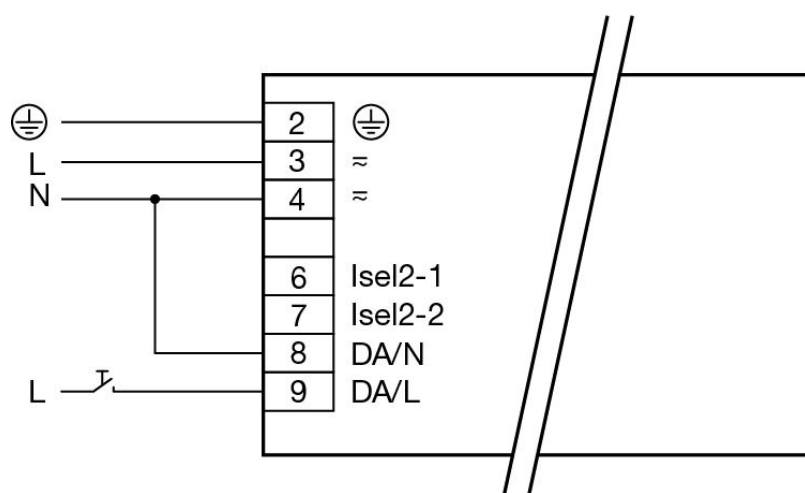
6.3.3. Installation

Wiring variants

There are two options for installing switchDIM: four-pole and five-pole wiring

Four-pole wiring

Configuration:



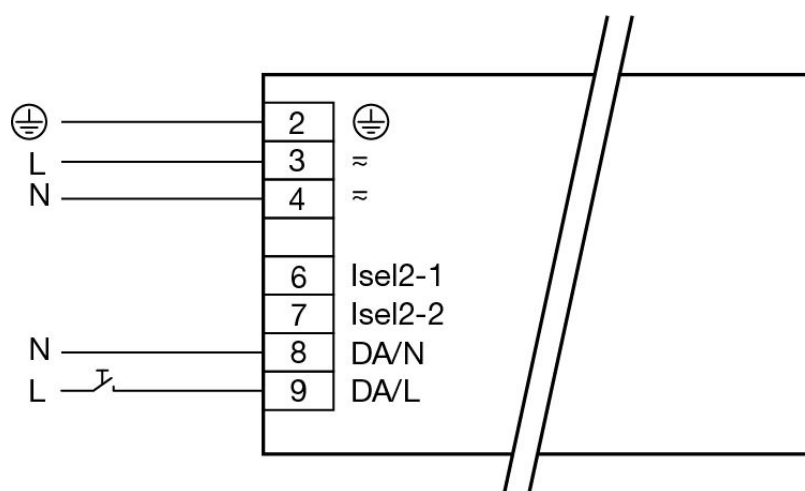
Phase (L), neutral (N), earth (PE), control line (L')

Benefits:

No need for a control line thanks to bridging terminal 6 and the N-connection of the luminaire

Five-pole wiring

Configuration:



Phase (L), neutral (N), earth (PE), control line (L), neutral (N)

Benefits:

Control can be changed at any time to a digital control signal (DSI or DALI) without having to change the luminaire or provide an additional control line

⚠ CAUTION!

For five-pole wiring the neutral conductor must be connected to DA/N.
This prevents 400 V being applied between adjacent terminals if a different phase is used for the control input.

6.4. Power-up Fading (PRE)

6.4.1. Description

The power-up fading function offers the opportunity to realise a soft start. The soft start will be applied at turning on the mains and at starts by switchDIM. The function is programmed as a DALI fade time in the range from 0.7 to 16 seconds and dims in the selected time from 0% to the power-on level.

By factory default power-up fading is not active (0 seconds).

6.4.2. Commissioning

Procedure via the masterCONFIGURATOR

- ▶ Open dialog box "Tridonic-specific configuration"
- ▶ Click tab "Power-up Fading"
- ▶ Choose value from drop-down menu "Power-up Fading"
- ▶ Click "save"
→ Changes are saved

Further information can be found in the masterCONFIGURATOR manual (see Reference list).

6.5. DALI (PRE)

6.5.1. Description

DALI standard

NOTICE

LCA PRE devices support the new DALI standard V2 (according to EN 62386-102).

DALI (Digital Addressable Lighting Interface) is an interface protocol for digital communication between electronic lighting equipment.

The DALI standard was developed by Tridonic together with renowned manufacturers of operating and control equipment. Today, these manufacturers belong to the DALI Activity Group which promotes the use and further development of DALI.

The DALI standard is defined in IEC 62386. A test procedure standardised by the DALI Activity Group ensures compatibility between products from different manufacturers. Tridonic products have undergone this test and meet all the requirements. This is indicated by the logo of the DALI Activity Group on the device.

The agreement by the lighting industry to adopt a common protocol has opened up a virtually unlimited number of options. With the right choice of individual DALI components an extremely wide range of requirements can be met, from operating a simple light switch to lighting management systems for entire office complexes with thousands of light sources.

DALI in Action

DALI offers a lot of possibilities:

- ▶ DALI line: 64 control gear can be grouped to a line
- ▶ DALI groups: Every control gear can be attributed into 16 groups
- ▶ Addressability: All control gear are individually addressable
- ▶ Grouping: Possible without complicated rewiring
- ▶ Programmability: Individual programmability makes it possible to use functions which transcend the DALI standard
- ▶ Monitoring: Easily possible thanks to status feedback
- ▶ Wiring: Simple wiring with five pole standard cables and a cable length of max. 300 metres
- ▶ Wiring: Polarity-free control lines can be used for mains and control lines
- ▶ Wiring: Multiple wiring possibilities (star, series and mixed wiring)
- ▶ Unaffected by interruptions: All luminaires receive the same, unaffected digital signal and dimming level
- ▶ Similar light level from first to last luminaire

Technical data of a DALI line:

- ▶ DALI voltage: 9.5 V - 22.4 DC

- ▶ Maximum DALI system current: max. 250 mA
- ▶ Data transfer rate: 1200 Baud
- ▶ Maximum line length: up to 300 m (for 1,5 mm²)

6.5.2. Commissioning

NOTICE

If the corridorFUNCTION is activated the control gear is controlled only by motion. To operate the control gear via DALI, DSI or switchDIM the corridorFUNCTION must be deactivated.

Further information can be found in the DALI Handbook (see Reference list).

eD

eD ("enhanced DALI") offers extended DALI commands. They can be used to activate specific commands of the control gear. The masterCONFIGURATOR software works with eD commands. These commands are Tridonic specific. They are not part of the DALI standard and are not publicly available.

6.6. ready2mains (PRE, EXC)

6.6.1. Description

ready2mains uses the mains cable to transmit information: easily, reliably and professionally.

Luminaires are controlled and dimmed directly via the mains, with no need for any additional wiring. ready2mains can be used to configure both drivers with a separate communication interface as well as fixed output drivers. The configuration saves time and is very flexible. ready2mains reduces production costs and installation costs and also reduces possible sources of error.

Dimming

ready2mains allows for mains-based group dimming, controlled via the ready2mains protocol and appropriate dimming interfaces. For details on the operation of ready2mains and its components see the relevant technical information.

- ▶ Easy refurbishment of dimmable and non-dimmable installations
- ▶ No rewiring within the ceilings
- ▶ Allows cost-effective solutions

Configuration

The ready2mains interface can be used to configure the main parameters of LED Drivers via the mains wiring (LED output current, CLO and DC level for LCA PRE; LED output current for LC EXC). These parameters can be adjusted either via ready2mains-capable configuration software or directly via the ready2mains programmer (output current only). Further information can be found in the Leaflet ready2mains (see Reference list).

- ▶ Easy configuration of luminaires
- ▶ Simple integration in existing test setups

6.7. Constant Light Output (PRE)

6.7.1. Description

The light output of an LED module reduces over the course of its life. The Constant Light Output function compensates for this natural decline by constantly increasing the output current of the LED driver throughout its life. As a result, a virtually uniform light output is achieved at all times.

For configuration purposes the expected module-specific values for lifetime and residual luminous flux must be specified. The output current is then controlled automatically on the basis of these values.

The LED driver typically starts with an output current ("Required Intensity") that corresponds to the expected residual luminous flux and calculates the increase in the value on the basis of the anticipated lifetime.

If the OTL function is enabled, visual feedback is given as soon as the LED exceeds the expected LED lamp life. If the expected LED lamp life is exceeded, the luminaire flashes for 2 seconds after being switched on.

6.7.2. Commissioning

Procedure via the masterCONFIGURATOR

NOTICE

To be able to adjust the parameters "Required intensity", "LED burning hours" and "Expected LED life" the "Advanced settings" must be activated.

Further information can be found in the masterCONFIGURATOR manual (see Reference list).

Activating the Constant Light Output function

- ▶ Open dialog box "Tridonic-specific configuration"
- ▶ Click tab "CLO and OTL"
- ▶ Set drop-down menu "Constant intensity" to "enabled"
- ▶ Click "save"
→ Changes are saved

Activating the Over the Lifetime function

- ▶ Open dialog box "Tridonic-specific configuration"
- ▶ Click tab "CLO und OTL"
- ▶ Set drop-down menu "Visual feedback" to "enabled"
- ▶ Click "save"
→ Changes are saved

Setting Required intensity and Expected LED life

- ▶ Open dialog box "Tridonic-specific configuration"
- ▶ Click tab "CLO and OTL"
- ▶ Enter values in input fields "Required intensity" and "Expected LED life"
- ▶ Click "save"
 - Changes are saved

Transferring existing values to a new control gear

If a control gear is replaced the existing parameter values can be transferred to the new control gear.

- ▶ Chose a control gear that is in the same room as the new control gear
- ▶ Open dialog box "Tridonic-specific configuration"
- ▶ Click tab "CLO and OTL"
- ▶ Note down the values for "Required intensity", "LED burning hours" and "Expected LED life"
- ▶ Close dialog box "Tridonic-specific configuration"
- ▶ Chose the new control gear
- ▶ Open dialog box "Tridonic-specific configuration"
- ▶ Click tab "CLO and OTL"
- ▶ Take the noted values and enter them in the input fields "Required intensity", "LED burning hours" and "Expected LED life"
- ▶ Click "save"
 - Changes are saved

Replacing the LED module

If an LED module is replaced the parameter "LED burning hours" must be set to "0".

- ▶ Open dialog box "Tridonic-specific configuration"
- ▶ Click tab "CLO and OTL"
- ▶ Delete value from input field "LED burning hours"
 - CLO function is automatically restarted
 - Changes are saved

Further information can be found in the masterCONFIGURATOR manual (see Reference list).

6.8. DC recognition (PRE, EXC)

6.8.1. Description

In emergency light systems with central battery supply the DC recognition function uses the input voltage to detect that emergency mode is in place. The control gear then automatically switches to DC mode and dims the light to the defined DC level. Without DC recognition different and more complex solutions need to be applied in order to detect emergency mode.

LED control gear of the LCA PRE series are factory preset to a DC level of 15%. This value can be customized. LED control gear of the LC EXC series have a DC level of 50%. This value is fixed and can not be changed.

Further information can be found in the masterCONFIGURATOR manual (see Reference list).

NOTICE

The control gear is designed to operate on DC voltage and pulsing DC voltage.
In DC recognition connected sensors are ignored.

6.9. Dimming on DC (PRE)

6.9.1. Description

If Dimming on DC is activated the requirements of the DC recognition function are ignored. Even if DC is detected the control gear continues to behave as in AC mode:

- ▶ The present dimming level is retained
- ▶ An emergency light level defined for the DC recognition function (DC level) is ignored
- ▶ Control signals via DALI und DSI continue to be executed

6.9.2. Commissioning

WARNING!

If Dimming on DC is activated then emergency mode is not recognised. The device no longer automatically switches to the emergency light level.

Make sure that if Dimming on DC is activated an appropriate dimming level is selected for the emergency lighting mode.

Please also note the following:

- ▶ Dimming on DC may only be activated by trained personnel
- ▶ A security code must be entered before activation
- ▶ The security code is issued only after a consent form has been signed
- ▶ Dimming on DC must not be used in emergency lighting systems to EN 50172

Procedure with masterCONFIGURATOR

Further information can be found in the masterCONFIGURATOR manual (see Reference list).

6.10. Intelligent Temperature Guard (PRE, EXC)

WARNING!

The T_c temperature is the maximum permitted in terms of safety.
Operating the control gear above the permitted T_c temperature is not compliant with relevant standards.
The Intelligent Temperature Guard function does not replace the proper thermal design of the luminaire and does not enable the lighting to operate for lengthy periods of time in impermissible ambient temperatures.

6.10.1. Description

The Intelligent Temperature Guard function provides protection against temporary thermal overloads. It slowly reduces the output if the maximum T_c temperature is exceeded. This way instant failure of the control gear can be prevented. Thermal overload protection is triggered as soon as the T_c temperature is exceeded by around 5 to 10 °C. The precise trigger temperature depends on the device. The value is selected so that the protection function is not performed until there is a significant impact on rated life.

The output is reduced in small stages that are generally imperceptible to the user:

- ▶ The temperature is checked every two minutes
- ▶ If the temperature is too high the output is reduced by about 2%
- ▶ This process is repeated until the control gear returns to its permitted temperature range
- ▶ The maximum output reduction is
 - » 50% for LC EXC and LCA PRE

The following table shows the exact behaviour and parameters of the Intelligent Temperature Guard function for LCA PRE.

	LCA PRE
Start of power reduction	$\approx 10^\circ\text{C}$ above T_c ⁽¹⁾
Power reduction rate	Reduction of max level by 1 DALI step / 2 min
Power reduction methode	Analogue dimming (100-1%)
Power reduction process and control	Power reduction is dependent on temperature: <ul style="list-style-type: none"> » Power reduction continues if temperature still rises » Power reduction stops if temperature does not rise anymore or if max power reduction is reached (min power level = 0%)
Min power level	$\approx 50\%$ dimming level

Shut off behavior	<p>No shut off behavior: Device will not shut off if temperature still rises.</p> <p>AC mode: Device switches to 15% dimming level DC mode: Device switches to 50% dimming level</p>
Automatic restart behavior	<p>No automatic restart behavior (because there is no shut off behavior) Device stays at 15% dimming level</p>
Restart temperature	<p>No restart temperature</p>

(1) Rated T_c is device specific.

(2) Flicker will be visible because of PWM frequency.

NOTICE

The standard setting for the dimming curve is logarithmic:
If alternative dimming curves are used the power reduction can be implemented differently.

7. Reference list

7.1. Related documents

- ▶ DALI manual: http://www.tridonic.com/com/en/download/technical/DALI-manual_en.pdf
- ▶ Documentation masterCONFIGURATOR:
http://www.tridonic.com/com/en/download/Manual_masterConfigurator_en.pdf
- ▶ Declarations of conformity: <http://www.tridonic.com/com/en/declarations-of-conformity.asp>
- ▶ Certificates: <http://www.tridonic.com/com/en/certificates.asp>

7.2. Downloads

- ▶ Tridonic software: <http://www.tridonic.com/com/en/software.asp>
- ▶ Download masterCONFIGURATOR: <http://www.tridonic.com/com/de/software-masterconfigurator.asp>

7.3. Additional information

- ▶ Leaflet ready2mains:
http://www.tridonic.com/com/en/download/brochures/Leaflet_ready2mains_EN_web.pdf
- ▶ corridorFUNCTION: <http://www.corridorfunction.com/corridorFUNCTION/index.html>
- ▶ Guarantee conditions: <http://www.tridonic.com/com/en/guarantee.asp>
- ▶ Data sheets: <http://www.tridonic.com/com/en/data-sheets.asp>
- ▶ Environmental declarations: <http://www.tridonic.com/com/en/environmental-declarations.asp>
- ▶ Product specifications: <http://www.tridonic.com/com/en/product-specifications.asp>
- ▶ Other technical documents: <http://www.tridonic.com/com/en/technical-docs.asp>